

# Właz prostokątny B1

## 750x750 mm

Rectangular manhole door for wine cooper in AISI 304 or AISI 316 stainless steel – frame in flat stainless steel – vertical outwardly opening access 750x750 mm.

Working pressure: -1,0/+1,0 Bar

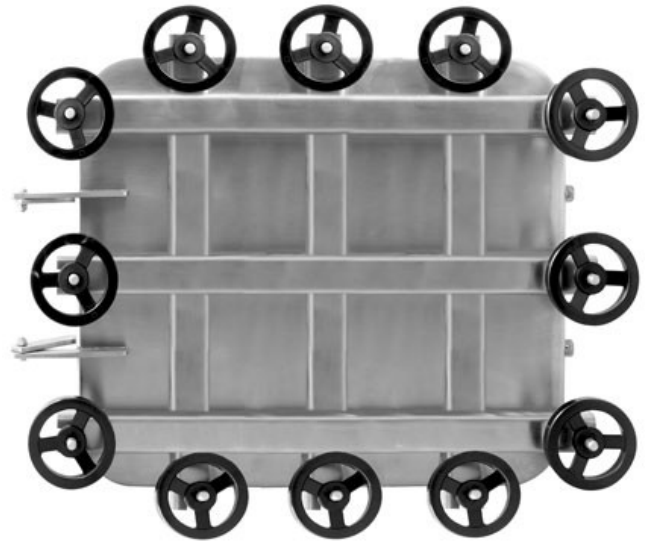
Tailored height on request  
Max height of frame 160mm

Standard handwheel: nylon handwheel (vlt1816004)  
Standard gasket: EPDM  
Standard surface finish: electropolished cover/satin frame

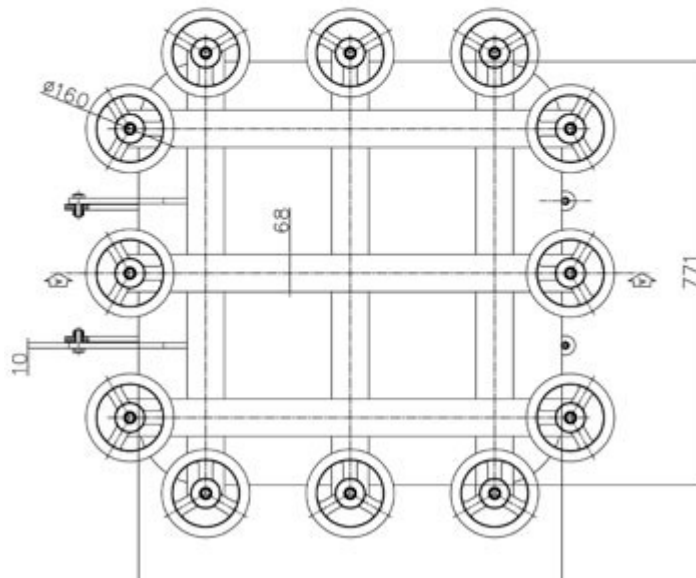
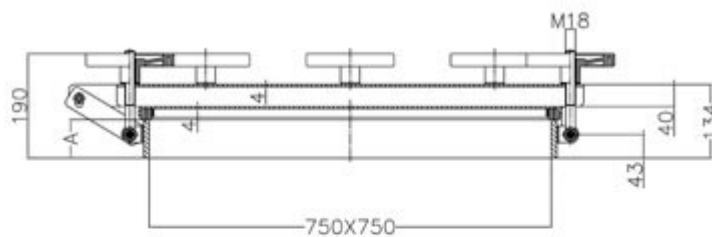
Właz prostokątny AISI 304 lub AISI 316/L  
- otwierany na zewnątrz  
- płaski kołnierz ze stali nierdzewnej  
- prześwit 750x750 mm.

Ciśnienie robocze: -1/+1 bar (bez PED)

Standardowe pokrętki: z tworzywa sztucznego (vlt1816004)  
Standardowa uszczelka: EPDM  
Standardowe wykończenie powierzchni: pokrywa elektro polerowana / kołnierz satynowy



| A        | Weight      |
|----------|-------------|
| 70x8 mm  | +/- .... kg |
| 70x10 mm | +/- .... kg |



| Available gaskets |             |
|-------------------|-------------|
| TYPE OF MATERIAL  | TEMPERATURE |
| EPDM              | -35°/+110°  |
| NITRILE (NBR)     | -15°/+110°  |
| SILICON           | -35°/+200°  |
| VITON             | -20°/+200°  |