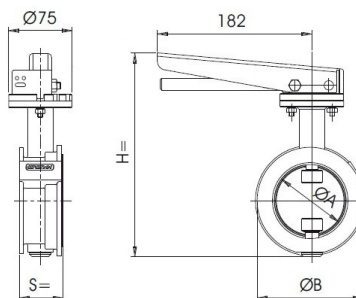


Przepustnica Typu „BV” DN50(2'') 80(3'') 100(4'')

Zgodnie z EN14432-2006

Posiada uznanie TDT nr TDT-UW-108/12



| Model | ØA | ØB | S | H | Max. ciśnienie | Material AISI |
|--------------------|----------|--------|-------|--------|----------------|---------------|
| BV 50 (2'') | Ø 48 mm | 90 mm | 35 mm | 197 mm | 6,0 Bar | 316 |
| BV 80 (3'') | Ø 77 mm | 125 mm | 52 mm | 236 mm | 6,0 Bar | 316 |
| BV100 (4'') | Ø 102 mm | 150 mm | 57 mm | 256 mm | 6,0 Bar | 316 |



| | Material | Art. |
|-------|----------|--------|
| DN 50 | 316 | BV0556 |
| DN 80 | 316 | BV0856 |
| DN100 | 316 | BV1056 |



| | Material | Art. |
|--------------|----------|---------|
| DN 50 2"GAS | 316 | BV0576 |
| DN 80 3"GAS | 316 | BV0876 |
| DN100 4"GAS | 316 | BV1076G |
| DN100 4"CASS | 316 | BV1076 |



| | Material | Art. |
|-------|----------|--------|
| DN 50 | 316 | BV0566 |
| DN 80 | 316 | BV0866 |
| DN100 | 316 | BV1046 |



| | Material | Art. |
|-------|----------|---------|
| DN100 | 316 | BV1086E |



TRZPIEŃ

| | |
|-------|--------|
| DN 50 | BV050A |
| DN 80 | BV080A |
| DN100 | BV100A |



ZESTAW NAPRAWCZY



DYSK

| | |
|-------|-------|
| DN 50 | BV052 |
| DN 80 | BV082 |
| DN100 | BV102 |



SRUBY



USZCZELKA

| | |
|-------|--------|
| DN 50 | BV050G |
| DN 80 | BV080G |
| DN100 | BV100G |



4 PVC DYSTANZERY



USZCZELKA

| | |
|-------|--------|
| DN 50 | BV051 |
| DN 50 | BV051B |
| DN 80 | BV081 |
| DN 80 | BV080B |
| DN100 | BV101 |
| DN100 | BV101B |



RACZKA Z TRZPIE-NIEM

| | |
|-------|---------|
| DN 50 | BV050GK |
| DN 80 | BV080GK |
| DN100 | BV100GK |

| | |
|-------|--------|
| DN 50 | A81112 |
| DN 80 | A812 |
| DN100 | A811 |

| | |
|-------|--------|
| DN 80 | BV120 |
| DN100 | BV120B |

| | |
|-------|---------|
| L=150 | BV1506 |
| L=350 | BV1506B |